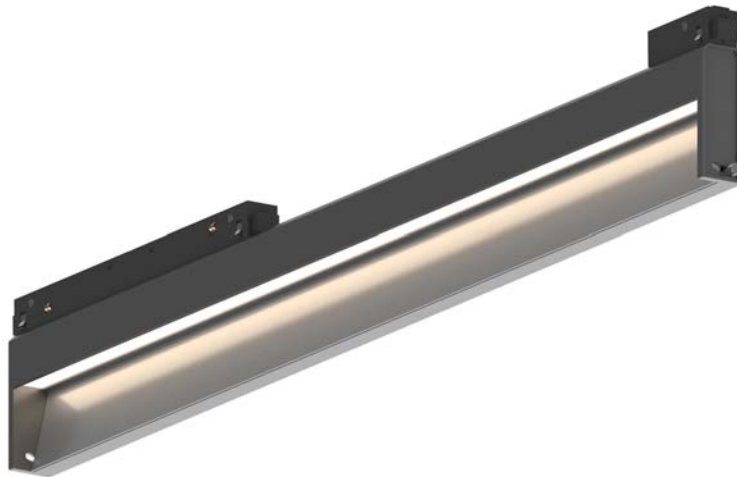


Low Voltage Track System Module ML26-WW560-13W-927



Light Output Ratio:	100.0%	
Luminaire Power:	12.97 W	
SHR Nominal:	0.00	Calculated using the TM5
SHR Maximum:	1.00	fine grid method.

C Range: 0 - 360DEG
C Interval: 15.0DEG
Test Speed: HIGH
Temperature: 25.3DEG
Operators: Jason
Test Date: 2020-05-08

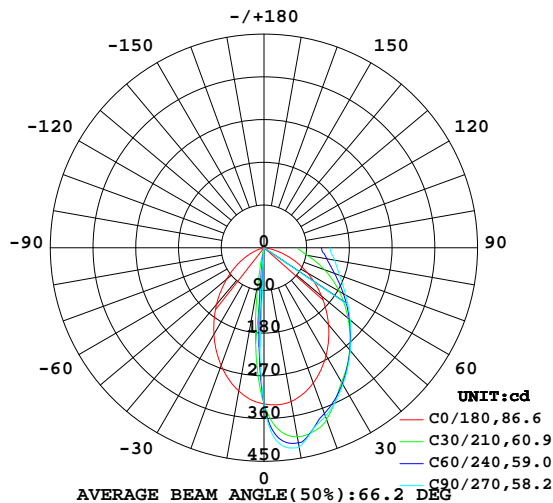
γ Range: 0 - 90DEG
γ Interval: 0.5DEG
Test System: EVERFINE GO-2000B_V1 SYSTEM V2.0.362
Humidity: 58%
Test Distance: 5.850m [K=1.0000]
Remarks:

LUMINAIRE PHOTOMETRIC TEST REPORT

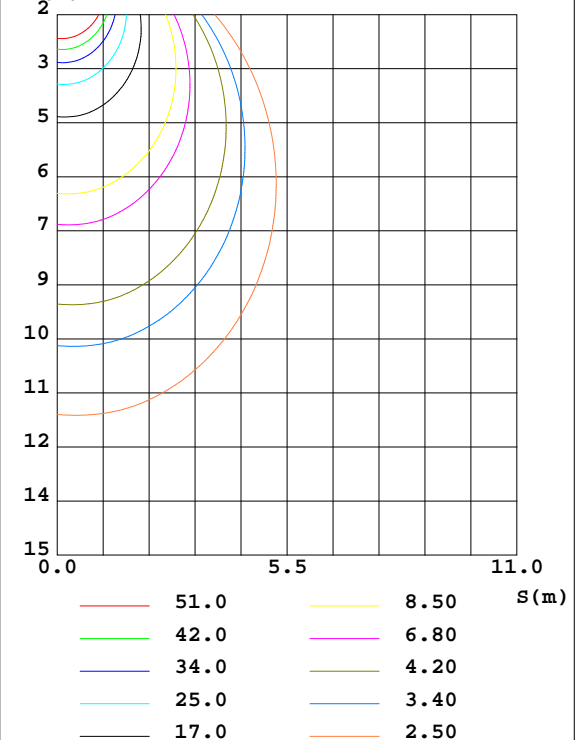
Test:U:48.00V I:0.2701A P:12.97W PF:1.000 Freq:0Hz Lamp Flux:667.258x1 lm		
NAME: ML26-WW560-13W-927	TYPE:Low Voltage Track System Module	
SPEC.:2700K	DIM.: L570mm*W22mm*H81mm	
MFR.: NEKO LIGHTING AG		

DATA OF LAMP		PHOTOMETRIC DATA				Eff: 51.47 lm/W
MODEL	SAMSUNG-2700K	I _{max} (cd)	437.0	S/MH(C0/180)	1.00	
NOMINAL POWER(W)	13	LOR(%)	100.0	S/MH(C90/270)	0.11	
RATED VOLTAGE(V)	48	TOTAL FLUX(lm)	667.26	η UP,DN(C0-180)	0.0,95.1	
NOMINAL FLUX(lm)	667.258	CIE CLASS	DIRECT	η UP,DN(C180-360)	0.0,4.9	
LAMPS INSIDE	1	η up(%)	0.0	CIBSE SHR NOM	0.00	
TEST VOLTAGE(V)	48	η down(%)	100.0	CIBSE SHR MAX	1.00	

LUMINOUS INTENSITY DISTRIBUTION DIAGRAM



C0 PLANE ISOLUX DIAGRAM (UNIT:lx)



C Range: 0 - 360DEG
 C Interval: 15.0DEG
 Test Speed: HIGH
 Temperature:25.3DEG
 Operators:Jason
 Test Date:2020-05-08

γ Range: 0 - 90DEG
 γ Interval: 0.5DEG
 Test System:EVERFINE GO-2000B_V1 SYSTEM V2.0.362
 Humidity:58%
 Test Distance:5.850m [K=1.0000]
 Remarks:

ZONAL FLUX DIAGRAM

ZONAL FLUX DIAGRAM:

γ	C0	C45	C90	C135	C180	C225	C270	C315	γ	Φ zone	Φ total	%lum, lamp
10	329.0	417.2	426.5	432.2	306.5	8.261	0.6852	8.337	0- 10	25.33	25.33	3.8,3.8
20	303.3	378.9	377.9	394.9	264.0	0.5800	0.4424	0.6637	10- 20	61.89	87.22	13.1,13.1
30	261.7	335.2	332.7	344.9	211.1	0.3875	0.1951	0.4396	20- 30	86.69	173.9	26.1,26.1
40	211.4	286.8	282.8	294.3	155.5	0.1862	0.1704	0.2267	30- 40	100.2	274.1	41.1,41.1
50	158.3	238.1	237.0	243.4	102.6	0.1391	0.1801	0.1672	40- 50	101.7	375.8	56.3,56.3
60	105.6	192.0	198.7	195.0	56.61	0.1561	0.2780	0.1711	50- 60	94.22	470.0	70.4,70.4
70	54.12	150.0	169.6	150.5	18.48	0.2673	0.3905	0.2671	60- 70	80.72	550.7	82.5,82.5
80	12.09	117.2	151.4	115.8	0.8804	0.3872	0.5512	0.3917	70- 80	64.67	615.4	92.2,92.2
90	0.5886	100.9	139.5	100.8	0.1813	0.6590	0.6900	0.6115	80- 90	51.90	667.3	100,100
100									90-100			
110									100-110			
120									110-120			
130									120-130			
140									130-140			
150									140-150			
160									150-160			
170									160-170			
180									170-180			
DEG	LUMINOUS INTENSITY:cd									UNIT:lm		

Conical surface Flux(90deg): 325.39 lm

%lum = 48.8%

%lamp = 48.8%

Conical surface Flux(120deg): 469.97 lm

%lum = 70.4%

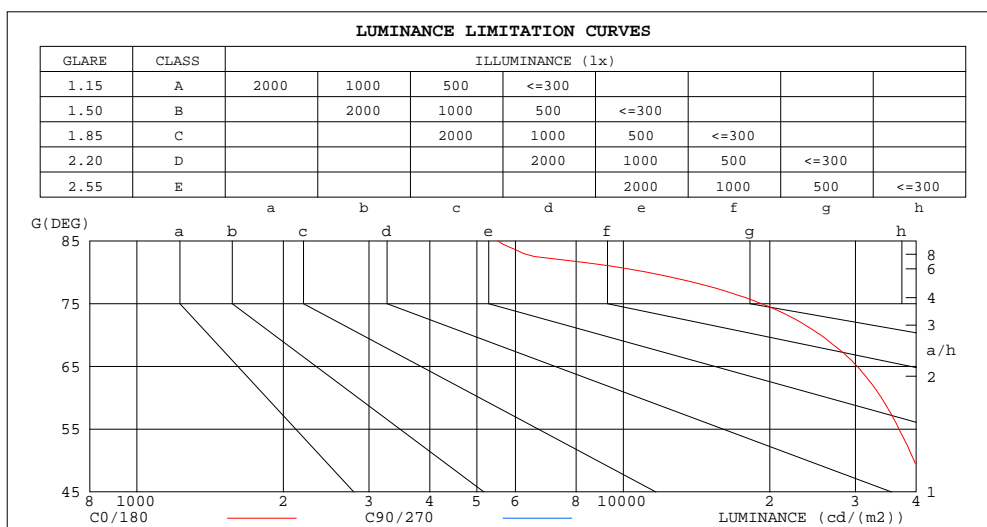
%lamp = 70.4%

C Range: 0 - 360DEG
C Interval: 15.0DEG
Test Speed: HIGH
Temperature:25.3DEG
Operators:Jason
Test Date:2020-05-08

γ Range: 0 - 90DEG
 γ Interval: 0.5DEG
Test System:EVERFINE GO-2000B_V1 SYSTEM V2.0.362
Humidity:58%
Test Distance:5.850m [K=1.0000]
Remarks:

LUMINANCE LIMITATION CURVES

Test:U:48.00V I:0.2701A P:12.97W PF:1.000 Freq:0Hz Lamp Flux:667.258x1 lm		
NAME: ML26-WW560-13W-927	TYPE:Low Voltage Track System Module	
SPEC.:2700K	DIM.: L570mm*W22mm*H81mm	
MFR.: NEKO LIGHTING AG		



LUMINANCE cd/(m2)		
G(DEG)	C0/180	C90/270
85	5522	257908
80	11192	137693
75	19222	97171
70	25429	78322
65	30263	68340
60	33925	62770
55	36879	59696
50	39578	58232
45	42017	57867

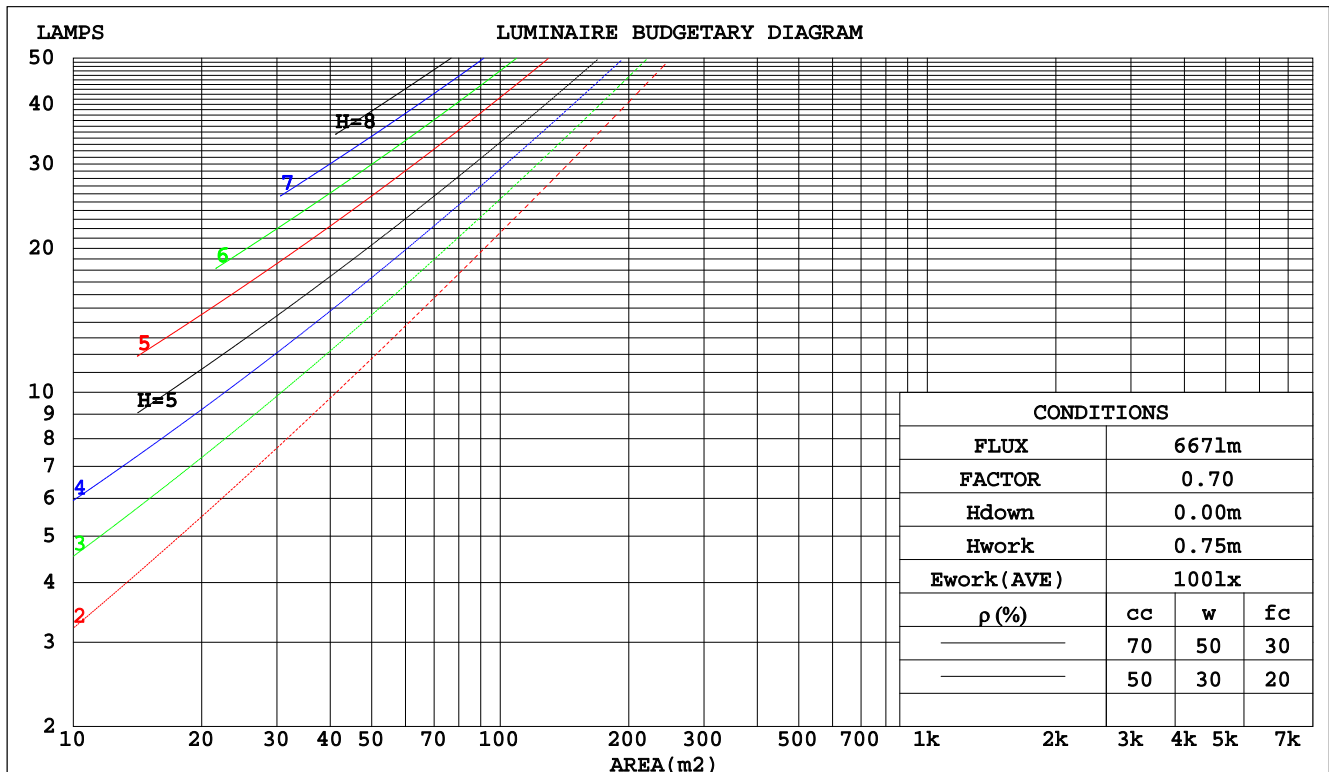
C Range: 0 - 360DEG
C Interval: 15.0DEG
Test Speed: HIGH
Temperature:25.3DEG
Operators:Jason
Test Date:2020-05-08

γ Range: 0 - 90DEG
γ Interval: 0.5DEG
Test System:EVERFINE GO-2000B_V1 SYSTEM V2.0.362
Humidity:58%
Test Distance:5.850m [K=1.0000]
Remarks:

CU AND LUMINAIRE BUDGETARY ESTIMATE DIAGRAM

Test:U:48.00V I:0.2701A P:12.97W PF:1.000 Freq:0Hz Lamp Flux:667.258x1 lm		
NAME: ML26-WW560-13W-927	TYPE:Low Voltage Track System Module	
SPEC.:2700K	DIM.: L570mm*W22mm*H81mm	
MFR.: NEKO LIGHTING AG		

pcc	80%			70%			50%			30%			10%			0
pw	50%	30%	10%	50%	30%	10%	50%	30%	10%	50%	30%	10%	50%	30%	10%	0
pfc	20%			20%			20%			20%			20%			0
RCR	RCR:Room Cavity Ratio						Coefficients of Utilization(CU)									
0.0	1.19	1.19	1.19	1.16	1.16	1.16	1.11	1.11	1.11	1.06	1.06	1.06	1.02	1.02	1.02	.00
1.0	1.00	.95	.90	.98	.93	.89	.93	.89	.86	.89	.86	.83	.86	.83	.81	.78
2.0	.86	.79	.72	.84	.77	.71	.81	.75	.69	.77	.72	.68	.74	.70	.66	.64
3.0	.76	.67	.60	.74	.66	.59	.71	.64	.58	.68	.62	.57	.65	.60	.56	.53
4.0	.67	.58	.50	.66	.57	.50	.63	.55	.49	.61	.54	.49	.58	.53	.48	.46
5.0	.60	.50	.43	.59	.50	.43	.57	.49	.43	.55	.48	.42	.53	.47	.42	.39
6.0	.54	.45	.38	.53	.44	.38	.51	.43	.37	.49	.42	.37	.48	.42	.37	.35
7.0	.49	.40	.34	.48	.40	.34	.47	.39	.33	.45	.38	.33	.44	.38	.33	.31
8.0	.45	.36	.30	.44	.36	.30	.43	.35	.30	.42	.35	.30	.40	.34	.29	.28
9.0	.41	.33	.27	.41	.33	.27	.40	.32	.27	.39	.32	.27	.37	.31	.27	.25
10.0	.38	.30	.25	.38	.30	.25	.37	.30	.25	.36	.29	.25	.35	.29	.24	.23



C Range: 0 - 360DEG
C Interval: 15.0DEG
Test Speed: HIGH
Temperature:25.3DEG
Operators:Jason
Test Date:2020-05-08

γ Range: 0 - 90DEG
γ Interval: 0.5DEG
Test System:EVERFINE GO-2000B_V1 SYSTEM V2.0.362
Humidity:58%
Test Distance:5.850m [K=1.0000]
Remarks:

WEC AND CCEC

Test:U:48.00V I:0.2701A P:12.97W PF:1.000 Freq:0Hz Lamp Flux:667.258x1 lm		
NAME: ML26-WW560-13W-927	TYPE:Low Voltage Track System Module	
SPEC.:2700K	DIM.: L570mm*W22mm*H81mm	
MFR.: NEKO LIGHTING AG		

pcc	80%			70%			50%			30%			10%			0	
pw	50%	30%	10%	50%	30%	10%	50%	30%	10%	50%	30%	10%	50%	30%	10%	0	
pfc	20%			20%			20%			20%			20%			0	
RCR	RCR:Room Cavity Ratio						Wall Exitance Coefficients(WEC)										
0.0																	
1.0	.381	.217	.069	.374	.213	.068	.360	.207	.066	.347	.200	.064	.336	.195	.063		
2.0	.330	.181	.056	.324	.178	.055	.312	.173	.054	.301	.169	.053	.290	.164	.052		
3.0	.294	.156	.047	.288	.154	.046	.278	.151	.046	.268	.147	.045	.259	.143	.044		
4.0	.265	.138	.041	.260	.136	.040	.251	.133	.040	.242	.130	.039	.234	.127	.039		
5.0	.241	.123	.036	.237	.122	.035	.229	.119	.035	.221	.117	.035	.214	.114	.034		
6.0	.221	.111	.032	.218	.110	.032	.210	.108	.031	.203	.106	.031	.197	.104	.031		
7.0	.205	.101	.029	.201	.100	.029	.194	.098	.028	.188	.097	.028	.183	.095	.028		
8.0	.190	.093	.026	.187	.092	.026	.181	.090	.026	.175	.089	.026	.170	.087	.025		
9.0	.177	.086	.024	.174	.085	.024	.169	.084	.024	.164	.082	.024	.160	.081	.023		
10.0	.166	.080	.022	.164	.079	.022	.159	.078	.022	.154	.077	.022	.150	.075	.022		

pcc	80%			70%			50%			30%			10%			0
pw	50%	30%	10%	50%	30%	10%	50%	30%	10%	50%	30%	10%	50%	30%	10%	0
pfc	20%			20%			20%			20%			20%			0
RCR	RCR:Room Cavity Ratio						Ceiling Cavity Exitance Coefficients(CCEC)									
0.0	.190	.190	.190	.163	.163	.163	.111	.111	.111	.064	.064	.064	.020	.020	.020	
1.0	.185	.156	.129	.158	.133	.111	.108	.092	.077	.062	.053	.045	.020	.017	.014	
2.0	.177	.132	.093	.152	.113	.081	.104	.078	.056	.060	.046	.033	.019	.015	.011	
3.0	.169	.114	.071	.145	.099	.061	.100	.069	.043	.057	.040	.025	.018	.013	.008	
4.0	.161	.101	.056	.138	.088	.049	.095	.061	.034	.055	.036	.020	.018	.012	.007	
5.0	.153	.091	.046	.131	.079	.040	.090	.055	.028	.052	.032	.017	.017	.011	.005	
6.0	.145	.083	.038	.125	.072	.033	.086	.050	.023	.050	.029	.014	.016	.010	.005	
7.0	.138	.076	.032	.118	.066	.028	.082	.046	.020	.048	.027	.012	.015	.009	.004	
8.0	.131	.070	.028	.113	.061	.025	.078	.043	.017	.045	.025	.010	.015	.008	.003	
9.0	.124	.065	.025	.107	.056	.022	.074	.040	.015	.043	.023	.009	.014	.008	.003	
10.0	.118	.061	.022	.102	.053	.019	.071	.037	.014	.041	.022	.008	.013	.007	.003	

C Range: 0 - 360DEG
C Interval: 15.0DEG
Test Speed: HIGH
Temperature:25.3DEG
Operators:Jason
Test Date:2020-05-08

γ Range: 0 - 90DEG
γ Interval: 0.5DEG
Test System:EVERFINE GO-2000B_V1 SYSTEM V2.0.362
Humidity:58%
Test Distance:5.850m [K=1.0000]
Remarks:

UGR(Unified Glare Rating) Table

Test:U:48.00V I:0.2701A P:12.97W PF:1.000 Freq:0Hz Lamp Flux:667.258x1 lm										
NAME: ML26-WW560-13W-927					TYPE:Low Voltage Track System Module					
SPEC.:2700K					DIM.: L570mm*W22mm*H81mm					
MFR.: NEKO LIGHTING AG										
ceiling/cavity	0.7	0.7	0.5	0.5	0.3	0.7	0.7	0.5	0.5	0.3
walls	0.5	0.3	0.5	0.3	0.3	0.5	0.3	0.5	0.3	0.3
working plane	0.2	0.2	0.2	0.2	0.2	0.2	0.2	0.2	0.2	0.2
Room dimensions	Viewed crosswise					Viewed endwise				
x = 2H y = 2H	29.7	31.3	30.0	31.5	31.7	30.8	32.4	31.1	32.6	32.8
3H	31.1	32.6	31.4	32.9	33.1	33.2	34.7	33.5	34.9	35.2
4H	31.6	33.1	32.0	33.3	33.6	34.7	36.1	35.0	36.3	36.6
6H	31.9	33.3	32.3	33.5	33.8	36.3	37.7	36.6	37.9	38.2
8H	32.0	33.3	32.3	33.6	33.9	37.3	38.6	37.6	38.9	39.2
12H	32.0	33.2	32.3	33.5	33.8	38.4	39.6	38.7	39.9	40.2
4H 2H	30.8	32.2	31.1	32.4	32.7	31.5	33.0	31.9	33.2	33.5
3H	32.6	33.9	33.0	34.2	34.5	34.2	35.5	34.6	35.8	36.1
4H	33.4	34.6	33.8	34.9	35.3	35.8	37.0	36.2	37.3	37.7
6H	34.1	35.1	34.5	35.5	35.8	37.7	38.8	38.1	39.1	39.5
8H	34.3	35.2	34.7	35.6	36.0	38.8	39.8	39.2	40.2	40.5
12H	34.4	35.3	34.8	35.7	36.1	40.0	40.9	40.5	41.3	41.7
8H 4H	34.4	35.4	34.8	35.7	36.1	36.3	37.3	36.7	37.7	38.1
6H	35.5	36.3	35.9	36.7	37.2	38.5	39.3	38.9	39.7	40.2
8H	36.0	36.7	36.4	37.1	37.6	39.8	40.6	40.3	41.0	41.4
12H	36.3	37.0	36.8	37.5	37.9	41.3	42.0	41.8	42.4	42.9
12H 4H	34.7	35.6	35.1	36.0	36.4	36.4	37.3	36.8	37.7	38.1
6H	36.0	36.8	36.5	37.2	37.7	38.7	39.4	39.1	39.9	40.3
8H	36.7	37.4	37.2	37.8	38.3	40.1	40.8	40.6	41.2	41.7
Variations with the observer position at spacings:										
S = 1.0H	+ 0.1 / - 0.2					+ 0.1 / - 0.1				
1.5H	+ 0.3 / - 0.4					+ 0.2 / - 0.3				
2.0H	+ 0.4 / - 0.7					+ 0.3 / - 0.4				

CIE Pub.117, 667.3 lm Total Lamp Luminous Flux Correct ($8\log(F/F_0) = -1.4$)

C Range: 0 - 360DEG
C Interval: 15.0DEG
Test Speed: HIGH
Temperature:25.3DEG
Operators:Jason
Test Date:2020-05-08

γ Range: 0 - 90DEG
 γ Interval: 0.5DEG
Test System:EVERFINE GO-2000B_V1 SYSTEM V2.0.362
Humidity:58%
Test Distance:5.850m [K=1.0000]
Remarks:

UTILIZATION FACTORS TABLE

Test:U:48.00V I:0.2701A P:12.97W PF:1.000 Freq:0Hz Lamp Flux:667.258x1 lm		
NAME: ML26-WW560-13W-927	TYPE:Low Voltage Track System Module	
SPEC.:2700K	DIM.: L570mm*W22mm*H81mm	
MFR.: NEKO LIGHTING AG		

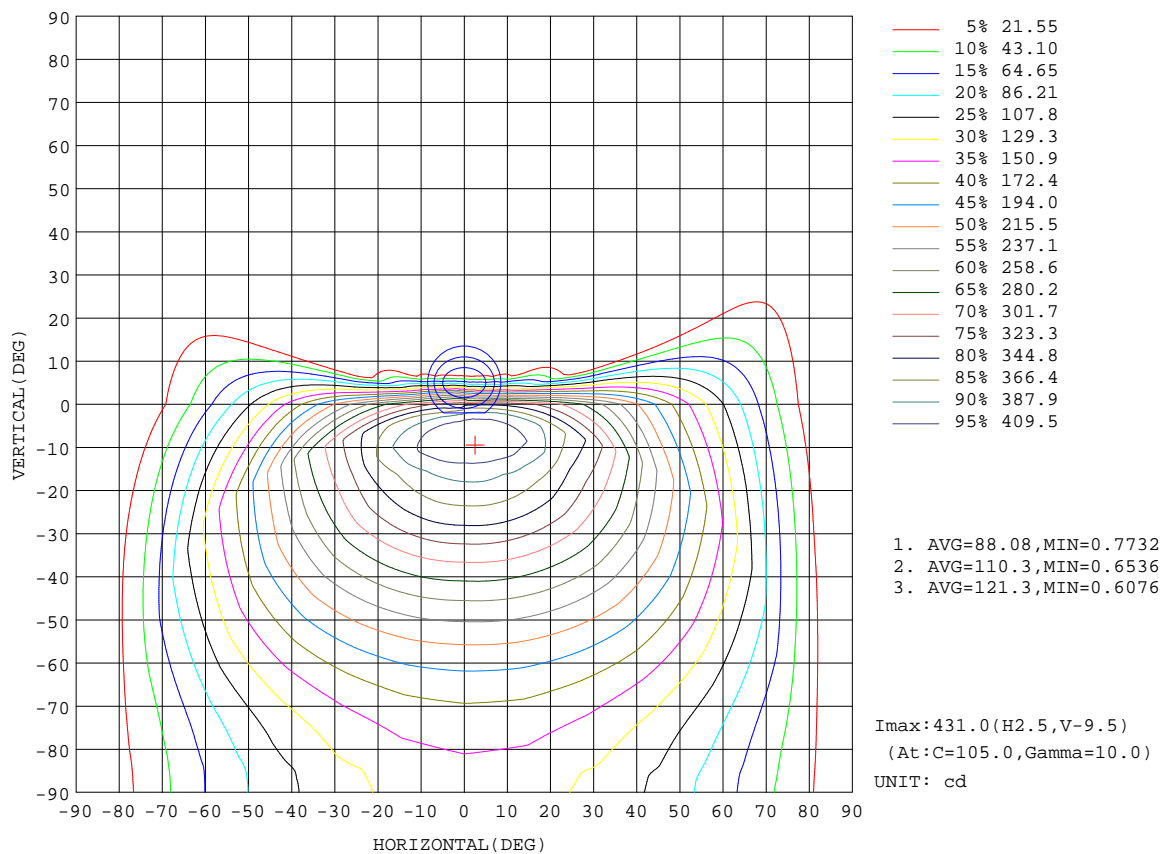
REFLECTANCE										
Ceiling	0.8	0.8	0.8	0.7	0.7	0.7	0.5	0.5	0.5	0
Walls	0.7	0.5	0.3	0.7	0.5	0.3	0.7	0.5	0.3	0
Working plane	0.2	0.2	0.2	0.2	0.2	0.2	0.2	0.2	0.2	0
ROOM INDEX	UTILIZATION FACTORS(PERCENT) $k(RI) \times RCR = 5$									
k = 0.60	56	44	37	55	44	37	54	43	37	30
0.80	65	53	46	64	53	45	62	52	45	38
1.00	73	61	53	72	61	53	69	62	53	45
1.25	80	68	61	78	68	60	75	66	60	52
1.50	85	74	66	83	73	66	80	71	65	56
2.00	91	82	74	89	81	74	86	78	72	64
2.50	96	87	80	93	85	79	89	82	77	68
3.00	99	91	84	97	89	83	92	86	81	72
4.00	103	96	91	101	95	89	96	91	87	77
5.00	106	100	95	103	98	93	99	94	90	80
ROOM INDEX	UF(total)									Direct
According to DIN EN 13032-2 2004			Suspended					SHRNOM = 1.25		

C Range: 0 - 360DEG
 C Interval: 15.0DEG
 Test Speed: HIGH
 Temperature:25.3DEG
 Operators:Jason
 Test Date:2020-05-08

γ Range: 0 - 90DEG
 γ Interval: 0.5DEG
 Test System:EVERFINE GO-2000B_V1 SYSTEM V2.0.362
 Humidity:58%
 Test Distance:5.850m [K=1.0000]
 Remarks:

ISOCANDELA DIAGRAM

Test:U:48.00V I:0.2701A P:12.97W PF:1.000 Freq:0Hz Lamp Flux:667.258x1 lm		
NAME: ML26-WW560-13W-927	TYPE:Low Voltage Track System Module	
SPEC.:2700K	DIM.: L570mm*W22mm*H81mm	
MFR.: NEKO LIGHTING AG		



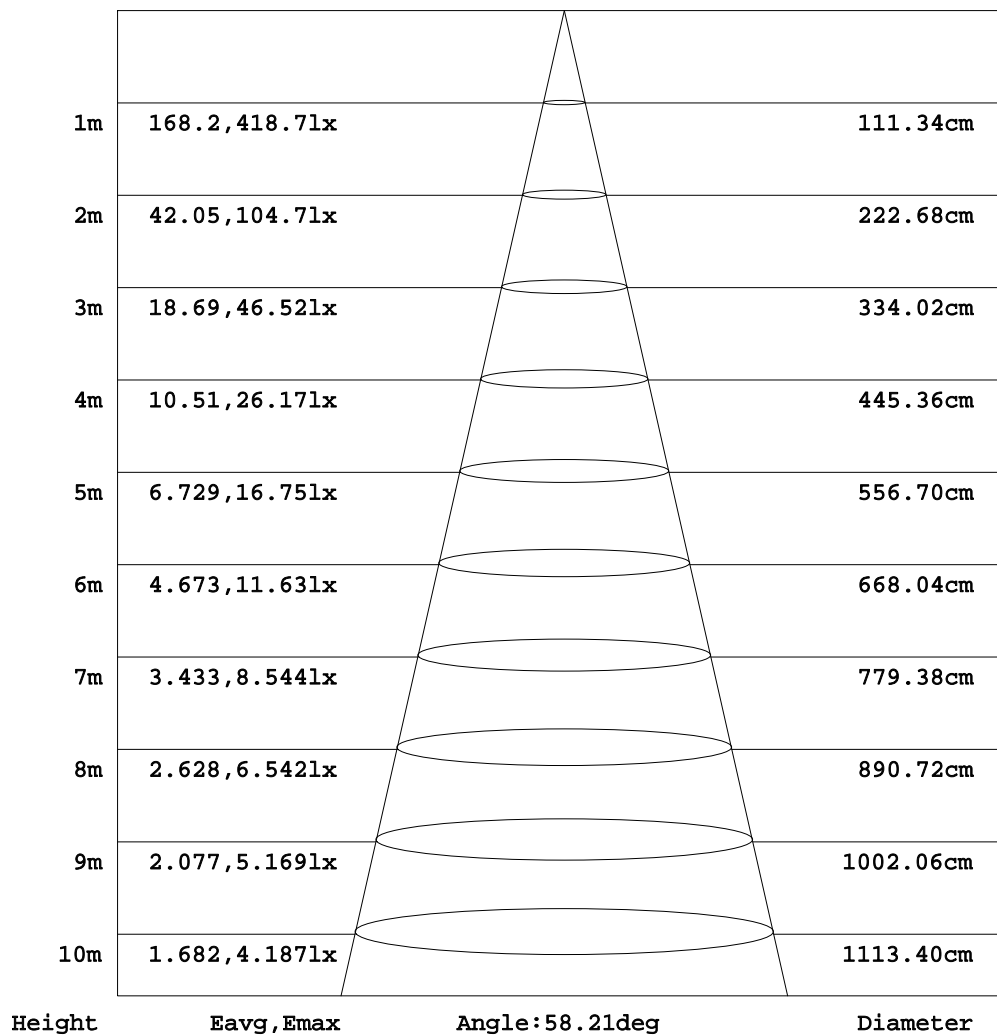
C Range: 0 - 360DEG
C Interval: 15.0DEG
Test Speed: HIGH
Temperature:25.3DEG
Operators:Jason
Test Date:2020-05-08

γ Range: 0 - 90DEG
γ Interval: 0.5DEG
Test System:EVERFINE GO-2000B_V1 SYSTEM V2.0.362
Humidity:58%
Test Distance:5.850m [K=1.0000]
Remarks:

AAI Figure

Test:U:48.00V I:0.2701A P:12.97W PF:1.000 Freq:0Hz Lamp Flux:667.258x1 lm		
NAME: ML26-WW560-13W-927	TYPE:Low Voltage Track System Module	
SPEC.:2700K	DIM.: L570mm*W22mm*H81mm	
MFR.: NEKO LIGHTING AG		

Flux out:169.2 lm



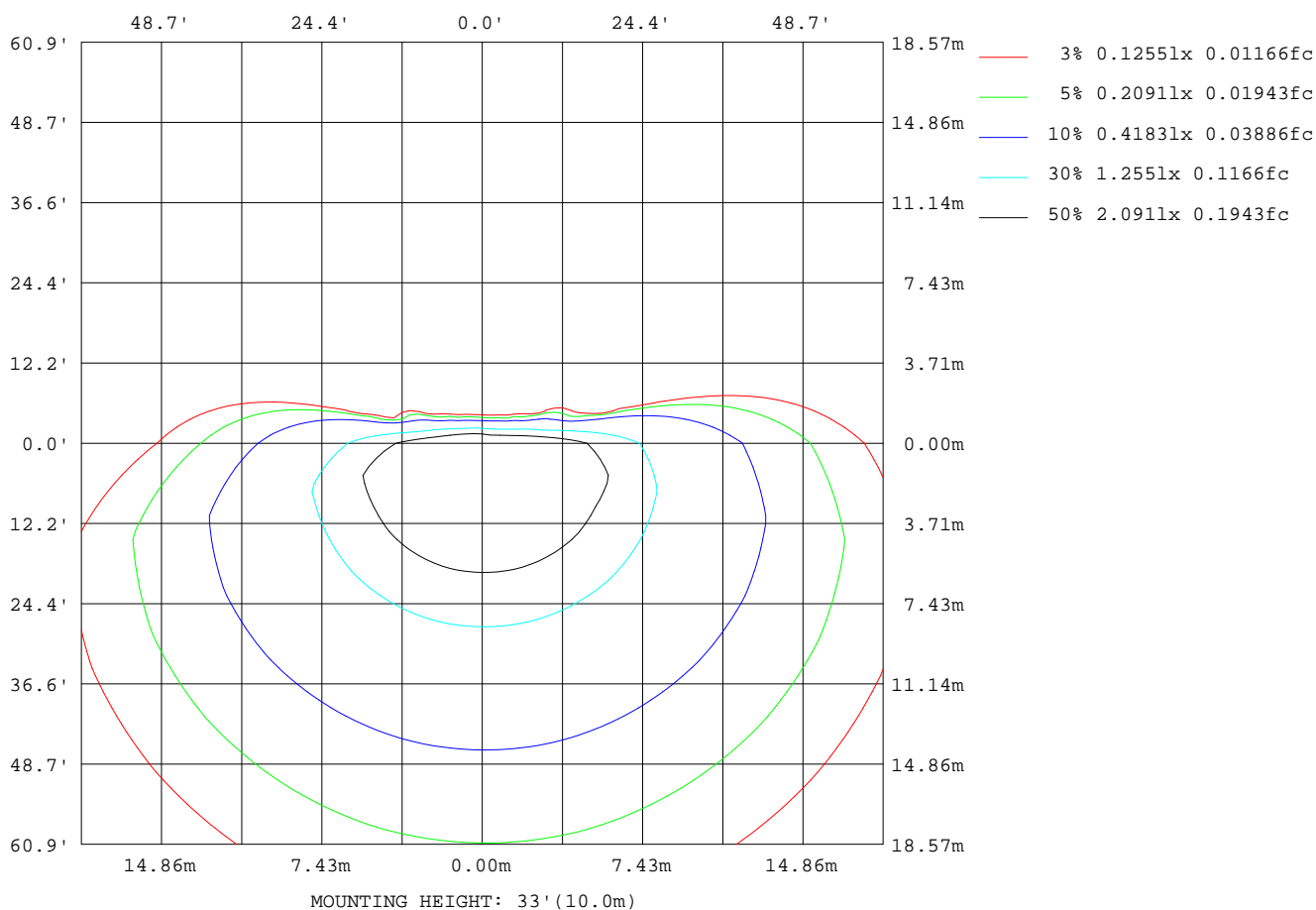
Note:The Curves indicate the illuminated area and the average illumination when the luminaire is at different distance.

C Range: 0 - 360DEG
C Interval: 15.0DEG
Test Speed: HIGH
Temperature:25.3DEG
Operators:Jason
Test Date:2020-05-08

γ Range: 0 - 90DEG
γ Interval: 0.5DEG
Test System:EVERFINE GO-2000B_V1 SYSTEM V2.0.362
Humidity:58%
Test Distance:5.850m [K=1.0000]
Remarks:

ISOLUX DIAGRAM

Test:U:48.00V I:0.2701A P:12.97W PF:1.000 Freq:0Hz Lamp Flux:667.258x1 lm		
NAME: ML26-WW560-13W-927	TYPE:Low Voltage Track System Module	
SPEC.:2700K	DIM.: L570mm*W22mm*H81mm	
MFR.: NEKO LIGHTING AG		



C Range: 0 - 360DEG
C Interval: 15.0DEG
Test Speed: HIGH
Temperature:25.3DEG
Operators:Jason
Test Date:2020-05-08

γ Range: 0 - 90DEG
γ Interval: 0.5DEG
Test System:EVERFINE GO-2000B_V1 SYSTEM V2.0.362
Humidity:58%
Test Distance:5.850m [K=1.0000]
Remarks:

LED Avg.L Report

Test:U:48.00V I:0.2701A P:12.97W PF:1.000 Freq:0Hz Lamp Flux:667.258x1 lm		
NAME: ML26-WW560-13W-927	TYPE:Low Voltage Track System Module	
SPEC.:2700K	DIM.: L570mm*W22mm*H81mm	
MFR.: NEKO LIGHTING AG		

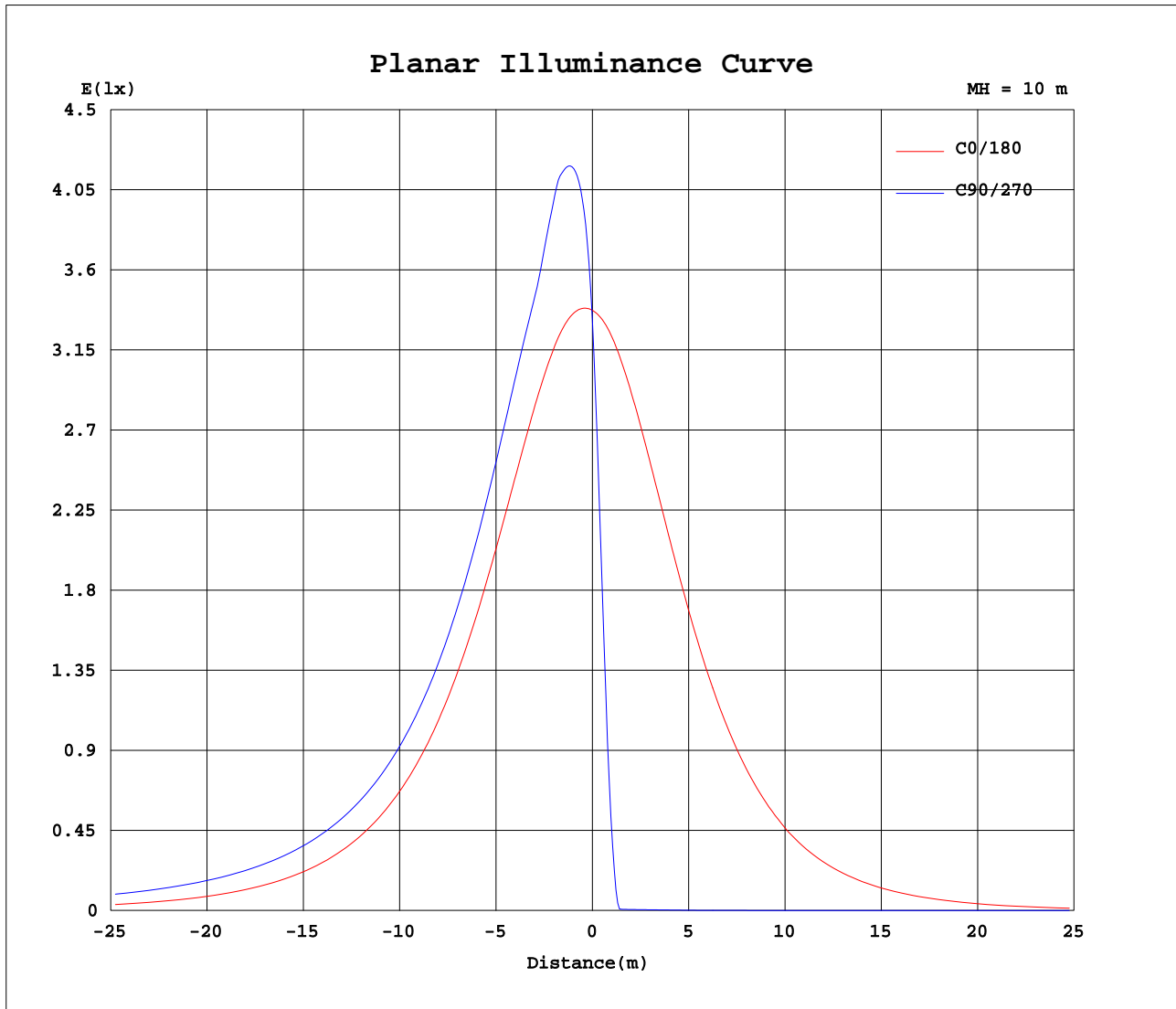
AvgL	cd/m2
L_0~180(65)av	21437
L_0~180(75)av	11127
L_0~180(85)av	2886
L_90~270(65)av	33973
L_90~270(75)av	48354
L_90~270(85)av	128530
L_45(65)av	31792
L_45(75)av	39879
L_45(85)av	96174

Standard: GB/T 29293-2012

C Range: 0 - 360DEG
C Interval: 15.0DEG
Test Speed: HIGH
Temperature:25.3DEG
Operators:Jason
Test Date:2020-05-08

γ Range: 0 - 90DEG
γ Interval: 0.5DEG
Test System:EVERFINE GO-2000B_V1 SYSTEM V2.0.362
Humidity:58%
Test Distance:5.850m [K=1.0000]
Remarks:

Planar Illuminance Curve



C Range: 0 - 360DEG
C Interval: 15.0DEG
Test Speed: HIGH
Temperature: 25.3DEG
Operators: Jason
Test Date: 2020-05-08

γ Range: 0 - 90DEG
 γ Interval: 0.5DEG
Test System: EVERFINE GO-2000B_V1 SYSTEM V2.0.362
Humidity: 58%
Test Distance: 5.850m [K=1.0000]
Remarks:

```

γ Range: 0 - 90DEG
γ Interval: 0.5DEG
Test System:EVERFINE GO-2000B_V1 SYSTEM V2.0.362
Humidity:58%
Test Distance:5.850m [K=1.0000]
Remarks:

```

```

γ Range: 0 - 90DEG
γ Interval: 0.5DEG
Test System:EVERFINE GO-2000B_V1 SYSTEM V2.0.362
Humidity:58%
Test Distance:5.850m [K=1.0000]
Remarks:

```